

Arbor Day – Celebrating Trees!

Subject: Visual Arts, Science

Grade Level: Grades K-5

Guided Instruction (To be done with teacher, parent, caregiver, older sibling, etc.)

Look at a selection of artworks featuring trees from the Nasher's collection: *Row of Maples* by Charles Burchfield, *Swamp Maple 2* by Alex Katz, and *Tree with Refrigerator, Washington* by Burk Uzzle. All images printed on inverse or available by searching our e-museum at <https://emuseum.nasher.duke.edu>.

Discuss the images by asking:

- What is going on in these pictures?
- What do you see that makes you say that?
- What more can we find?
- Why do you think the artist chose to feature a tree prominently in their artwork?

National Arbor Day is an annual observance that celebrates the role of trees in our lives and promotes tree planting and care. First observed in 1872, this annual celebration is held on the third Friday of April – this Friday, April 24th!

Activities / Art Making

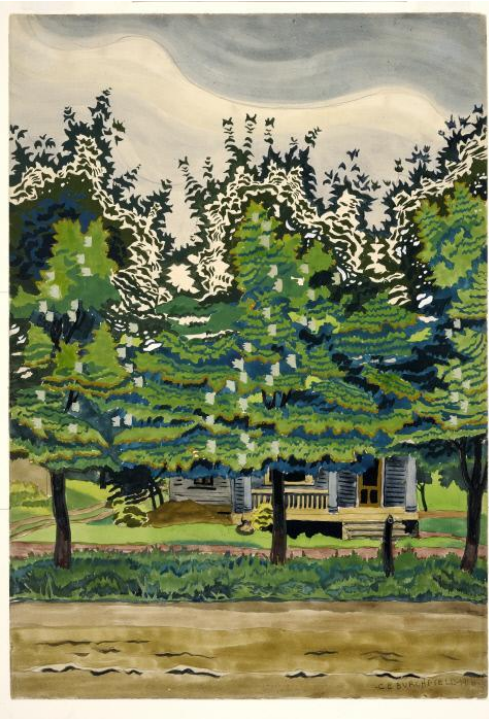
Head out into your yard or neighborhood and look closely at some trees. Pay attention to the textures in the bark, the patterns in the veins of the leaves, the colors, and the movement. If you are interested in identifying what type of tree you find, head over to The Arbor Day Foundation and use their handy online guide, *What Tree is That?*, available here: <https://www.arborday.org/trees/whattree/>.

Sketching

Bring along a pencil or pen and a piece of paper. Focus on a small part of the tree that is visually interesting – a single leaf, an interesting knot, a cool pattern in the bark – and try to draw what you see larger than life. Be sure to include as many details as possible.

Leaf Rubbing

Find a tree with many available leaves and pull a few different ones off. Place a leaf under a piece of paper and use the side of a crayon or pencil to rub lightly over the paper. The pattern of the leaf's veins will appear as darker lines on the paper. Experiment with different leaves, different colors, and layering of images.



(Left) **Charles Burchfield, *Row of Maples*, 1916.** Watercolor on paper, 20 x 13 15/16 inches (50.8 x 35.4 cm). Nasher Museum of Art at Duke University, Durham, NC, USA. Bequest of Louise and Alvin Myerberg, 2010.3.5. ©Charles Burchfield



(Right) **Alex Katz, *Swamp Maple 2*, 1970.** Lithograph of Paper, 40 1/2 x 27 3/8 inches (102.9 x 69.5 cm). Collection of the Nasher Museum of Art at Duke University, Durham, NC, USA. Gift of the Estate of Robert L. Dorfman, 2017.7.2. © Alex Katz.



Burk Uzzle, *Tree with Refrigerator, Washington*, 2006. Chromogenic print, 40x50 inches (101.6 x 127 cm). Collection of the Nasher Museum of Art at Duke University, Durham, North Carolina, USA. Gift of Charles Weinraub and Emily Kass, 2011.18.2. © Burk Uzzle